



Reqchecker 1.5 and higher Installation and activation manual



Table of content

1	Introduction.....	3
2	Check the pre-requisites.....	4
2.1	Hardware requirements:	4
2.2	Software requirements.....	4
2.3	Setup file.....	4
3	Install Reqchecker PRO.....	5
4	Find your hardware key.....	9
5	Send your hardware key to Reqchecker Support.....	10
6	Activate your PRO key.....	11
7	Renew your PRO key.....	12
8	Repair after a hardware update.....	13



1 Introduction

Thank you for choosing REQCHECKER software. This document presents:

- How to check that your computer is compliant,
- How to install Reqchecker PRO and send a request for your node-locked activation PRO key,
- How to activate your PRO key,
- How to renew you PRO key to get last updates and online support,
- How to get a new key after a hardware update.



2 Check the pre-requisites

2.1 Hardware requirements:

- RAM 1GB
- Hard Disk 170MB
- An Internet connection is not mandatory for use, but it allows update notifications.

2.2 Software requirements

- Microsoft Windows XP 32 bits, Microsoft Windows Seven 32 bits / 64 bits, Microsoft Windows 8 32 bits / 64 bits, Microsoft Windows 8.1 32 bits / 64 bits, Microsoft Windows 10 64 bits
- PDF reader (e.g. ADOBE PDF Reader or equivalent)
- EXCEL XLSX reader (e.g. Microsoft EXCEL 2007 or higher)
- Depending on the input documents: Microsoft WORD 2003 for .doc files, Apache OpenOffice WRITER for .odt files

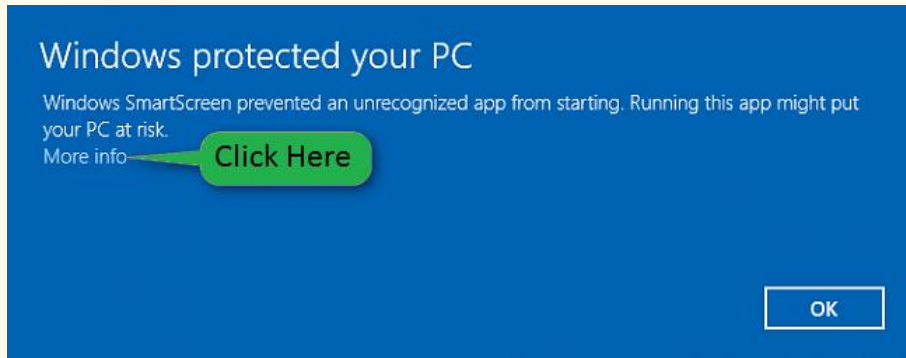
2.3 Setup file

The setup file is available at <http://reqchecker.eu/download-pro>. You must backup this file for future installation.

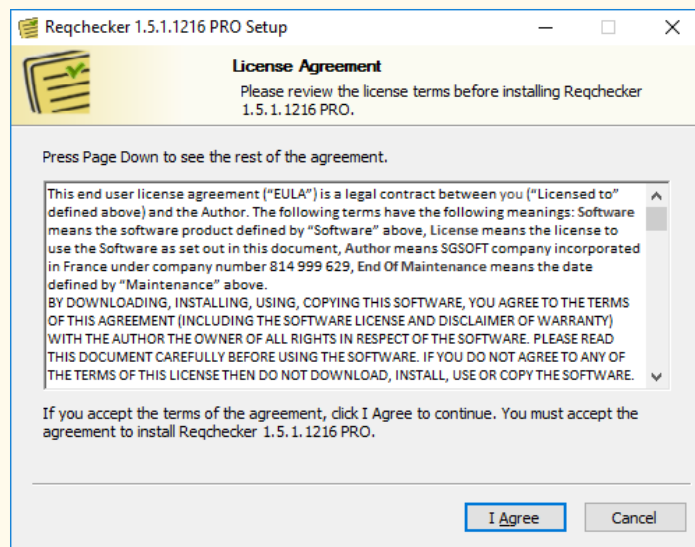


3 Install Reqchecker PRO

1. Launch the setup. The setup is certified free of viruses. Windows 7, Windows 8 and Windows 10 presents an alert because this file is not signed. Do not not worry about the following message.

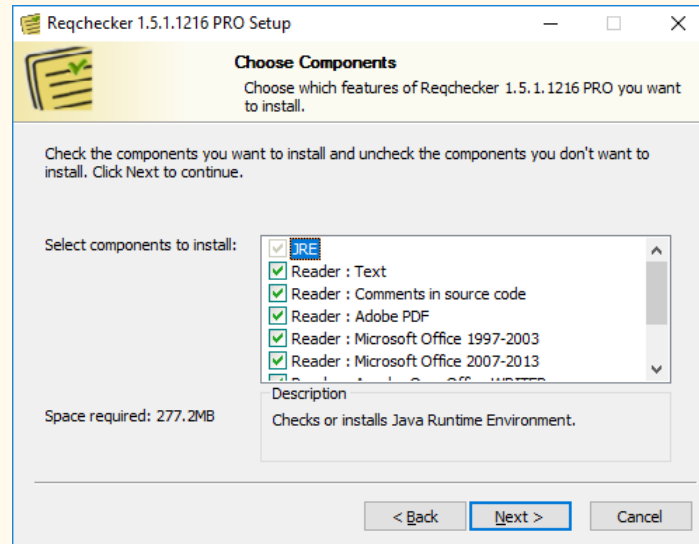


2. Read and accept EULA

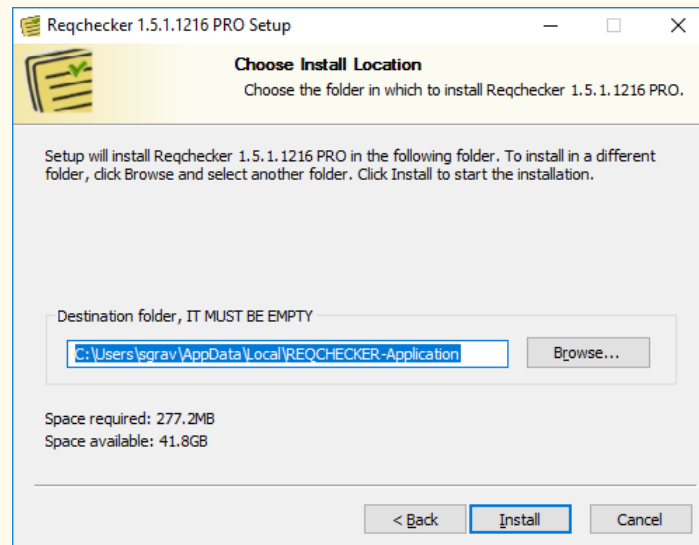




3. Uncheck unwanted components

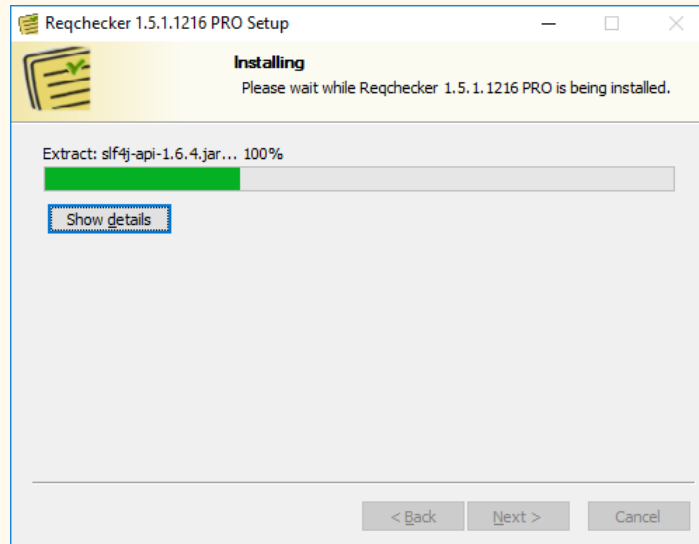


4. Select target directory. Keeping the default value is recommended.

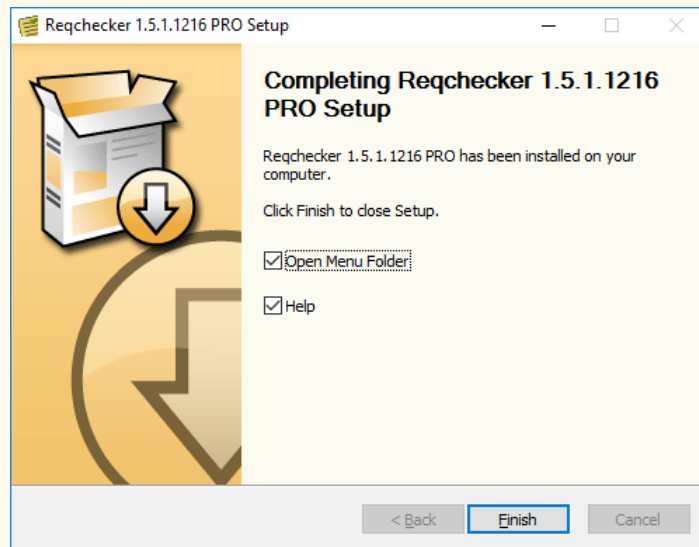




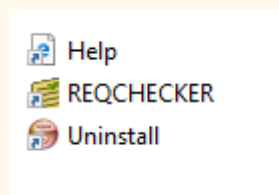
5. Launch installer



6. Click on Finish

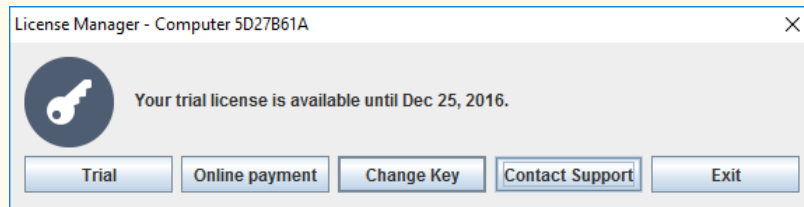


7. Launch Reqchecker in the menu folder





8. Click on contact support



9. Fill the mandatory fields. Your computer hardware key is automatically filled (8 characters length string like '5D27B61A').

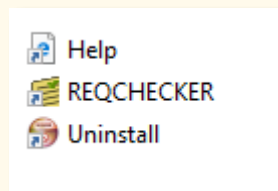
Your Name (required)
firstname lastname

Your Email (required)
Your e-mail is used only for reply. YOU MUST CHECK
firstname.lastname@yourcompany.com

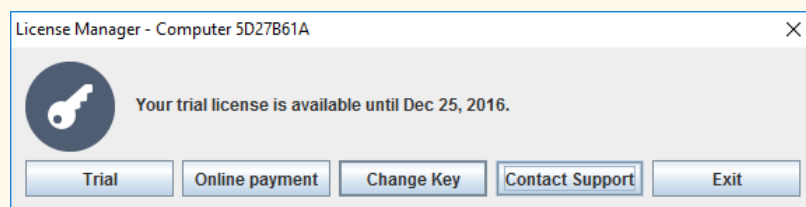
Subject (required)
License key

Your Message (required)
How can I get my PRO license key?

10. Click on send at the page bottom.
11. Launch again Reqchecker in the menu folder



12. Click on "Trial"



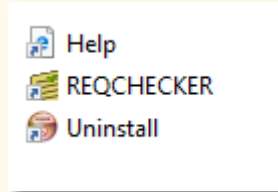
You can use the software until you receive the activation key by email.



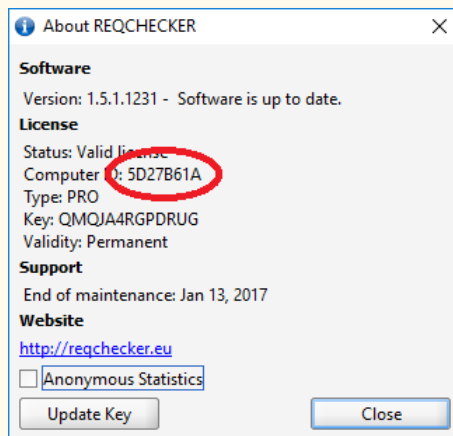
4 Find your hardware key

Your hardware key is requested to compute your activation key.

1. Launch Reqchecker in the menu folder



2. Click on Help / About
3. Your key is the value displayed on the line "Computer ID"

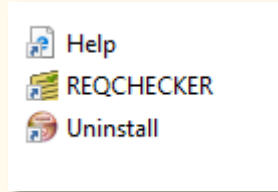




5 Send your hardware key to Reqchecker Support

You can send your hardware key with the support request.

1. Launch Reqchecker in the menu folder



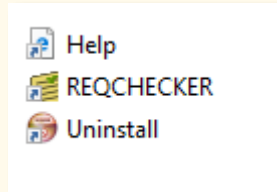
2. Click on menu Help / Support
3. Your hardware key is automatically copied in the field Computer ID
4. Enter your email in the field "Your Email (required)"
5. Write your request in the field "Your Message (required)", for example "request activation"



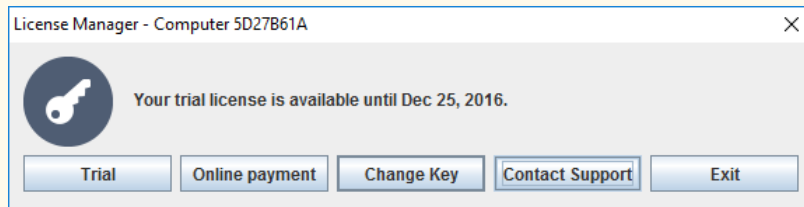
6 Activate your PRO key

You can start the activation procedure after receiving the email from reqchecker.eu with the activation key. The RECHECKER PRO activation key is a 13 characters length string like 'R5FZ4VEHHMFXS'.

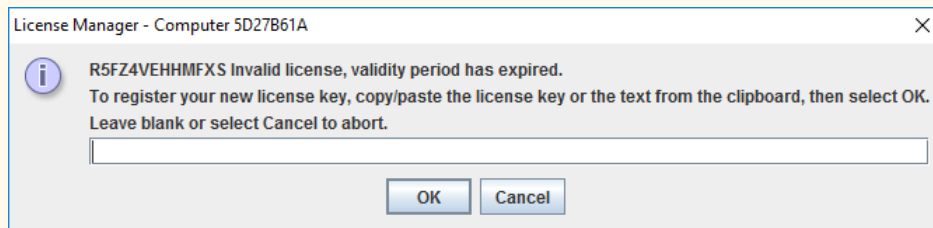
1. Launch Reqchecker in the menu folder



2. Click on "Change Key"



3. Copy the activation key from the email, paste in the input field and click OK

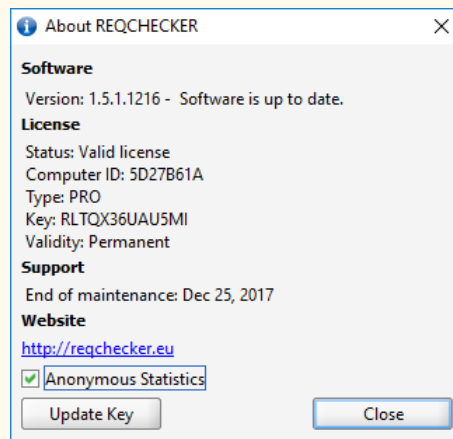




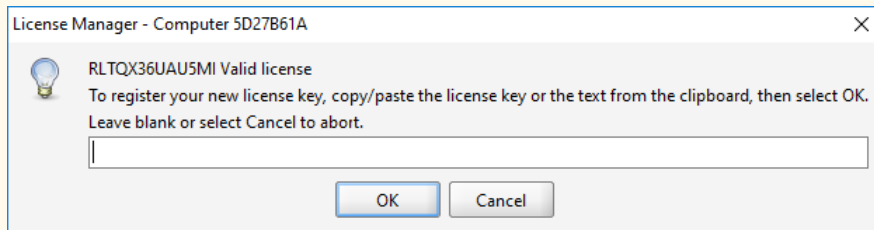
7 Renew your PRO key

Your activation key must be updated to renew your support option or after a hardware update.

1. Launch Reqchecker
2. Open menu Help / About
3. Click on 'Update Key' button



4. Paste the new key

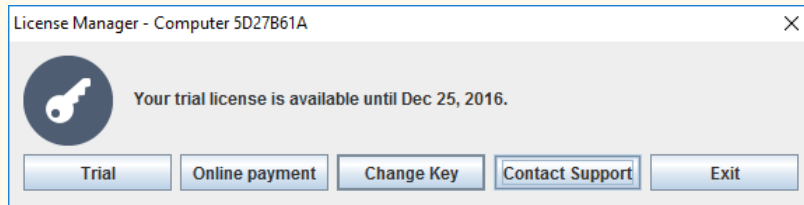




8 Repair after a hardware update

After a hardware update, your PRO key will not activate the software. You can renew your PRO key only once.

1. Launch Reqchecker
2. Click on "Contact Support"



3. Fill the mandatory fields.
4. Wait for the email from reqchecker.eu
5. Copy the activation key from the email, paste in the input field and click OK

